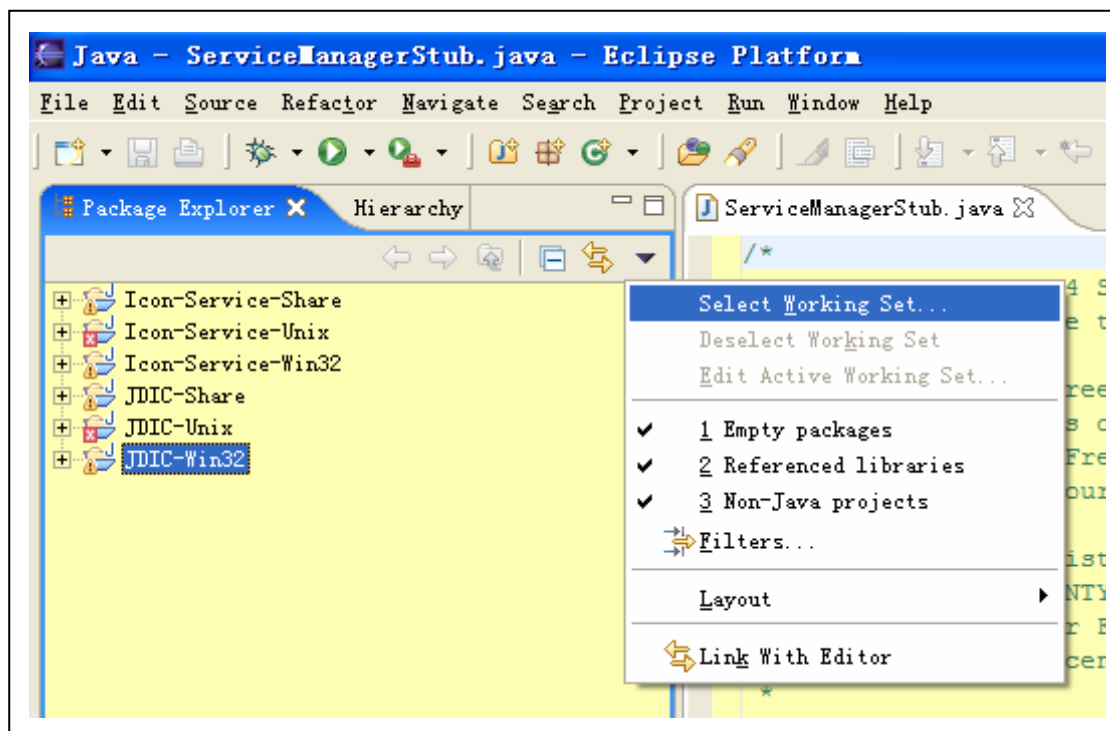


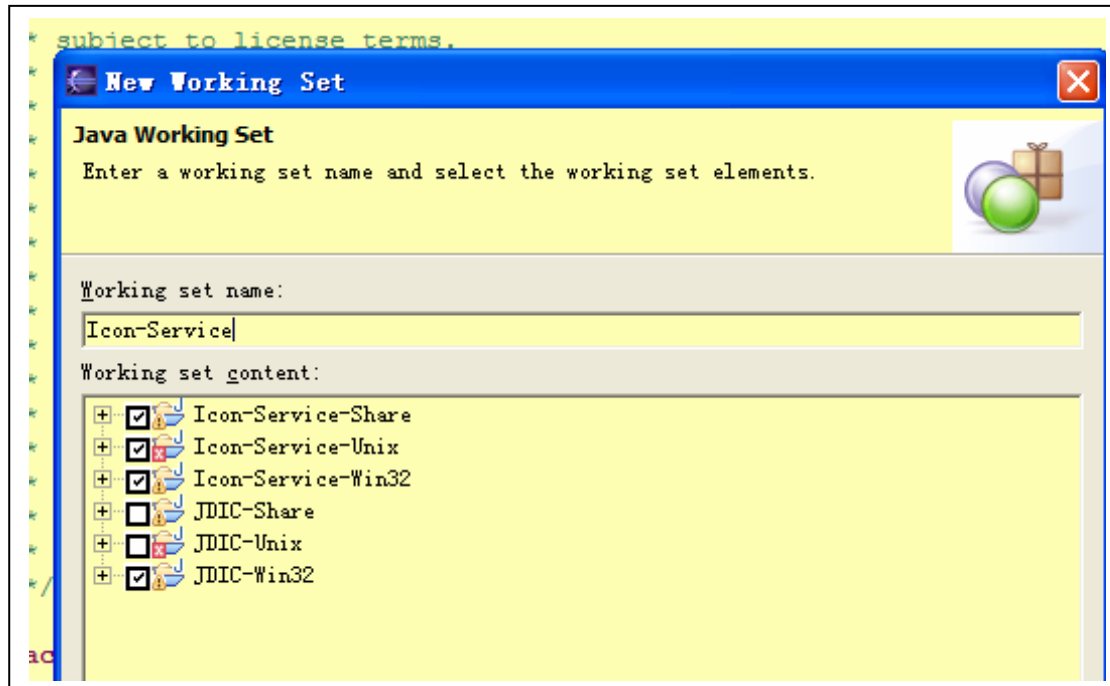
1. Projects appearance, with no workset defined.

As you can see, there are two major projects here: Icon-Service and JDIC. Each consists of three sub-projects: Icon-Service-Share, Icon-Service-Unix and Icon-Service-Win32; JDIC-Share, JDIC-Unix and JDIC-Win32.

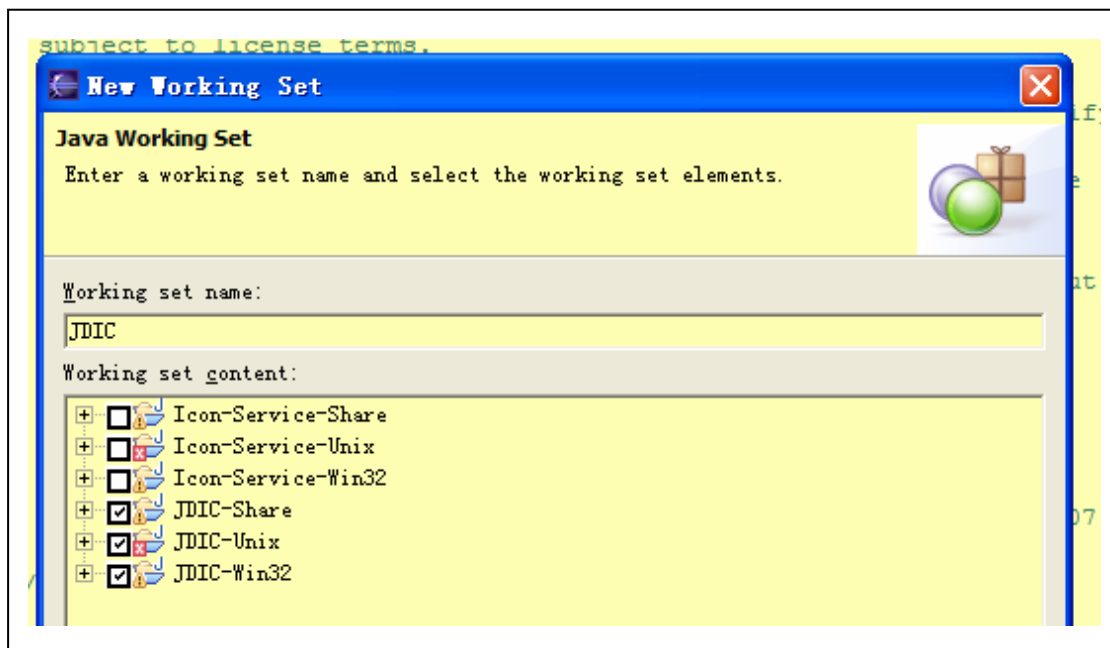
Actually, I don't like put so many projects in the package explorer at the same time. Why not categorize these projects and then you can easily switch among them easily?



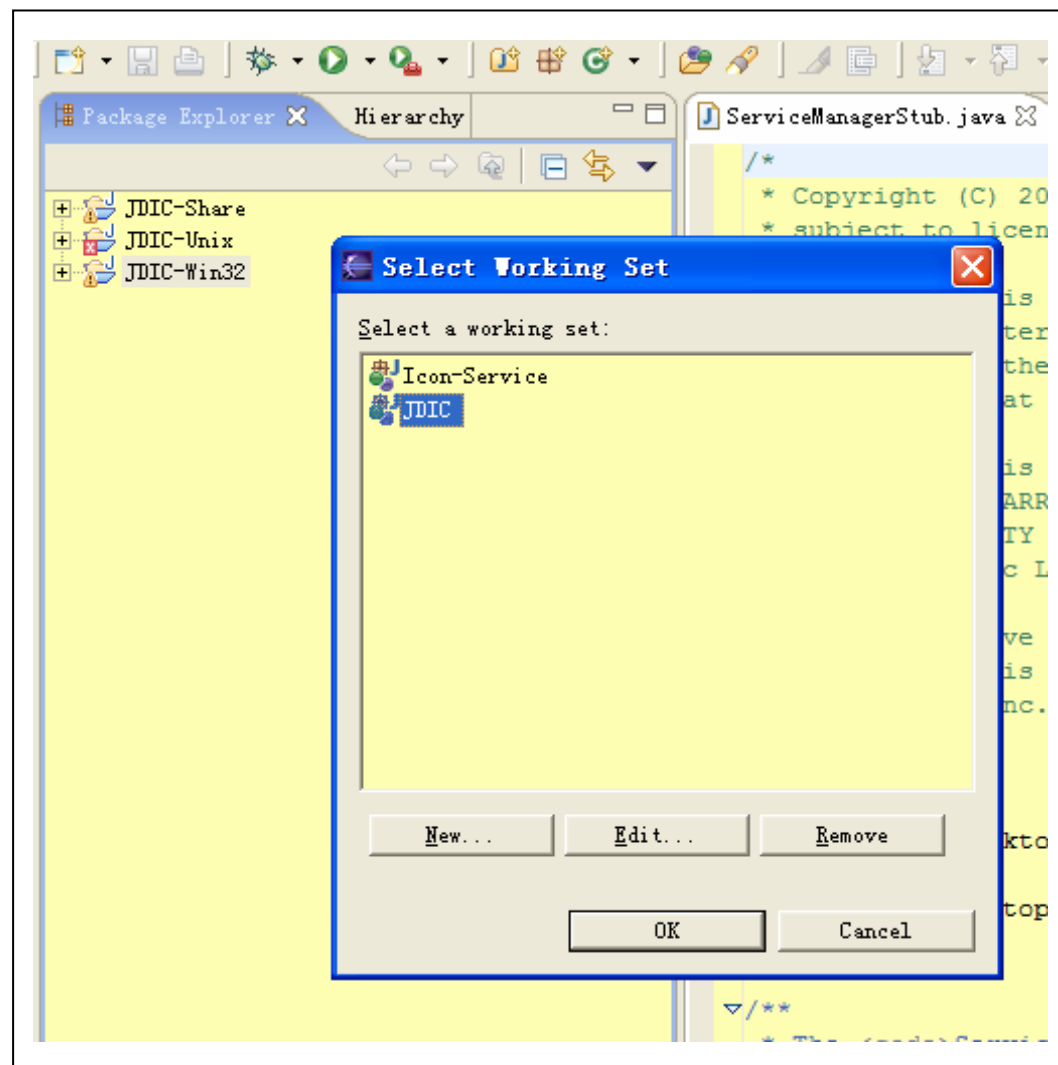
2. Now use "Select Working Set..." to create workset for each project.



3. Now create a “Icon-Service” workset and define the 3 projects as components of Icon-Service workset: Icon-Service-Share, Icon-Service-Unix and Icon-Service-Win32.



4. Now create a “JDIC” workset and define the 3 projects as components of JDIC workset: JDIC-Share, JDIC-Unix and JDIC-Win32.



5. Now I can easily switch between these relevant projects set, i.e. workset. I can select the Icon-service workset and I can select the JDIC workset. Only those projects defined as the components of these selected workset will appear in the Package Explorer, which make the Package Explorer quite neat and clean.